



# Datasheet


BL series

BL70DG-AP

File version: V1.0

## Power and responsibility statement

No content of this publication may be reproduced, disseminated, transcribed, stored in a retrieval system, or translated into any human or computer language, in any form or by any means, without the written permission of the Company. The use of unauthorized copies of products not only infringes copyright but may prevent Shuotian Information Technology from providing accurate and up-to-date information to users and operators.

 is the trademark of Shenzhen Shuotian Information Technology Co., Ltd. All other trademarks, product logos and trade names mentioned in this manual are the property of their respective owners.

The content of this manual is subject to change due to product version upgrade or other reasons. Shuotian Information Technology Co., Ltd. reserves the right to modify the content of this manual without any notice or prompt. In laws and regulations allow range, day to recognize Shuotian information technology co., LTD., in any case, all wrong because of the use of this product manual or this website content and cause of the accident, negligence, contract damage, defamation, copyright or intellectual property infringement and any special, incidental, indirect, secondary loss compensation, no any profits, data, and to compensate the loss of goodwill or anticipated savings, also does not assume any legal liability.

## Security statement

Please read the safety and compatibility information of the product before powering it up.

## Environmental statement

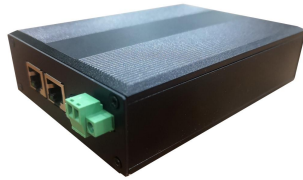
The product conforms to the design requirements of environmental protection. The storage, use and disposal of the product shall comply with the requirements of relevant national laws and regulations.

## Revision record

The revision record accumulates the notes for each manual update, and the latest version of the manual contains all previous manual updates.

# BL70DG-AP

**Outdoor Access Point**  
**2.4GHz 300Mbps**



## Product introduction:

BL70 is a new generation of high-performance, cost-effective and intrinsically safe wireless product that works in the 2.4G frequency band and supports 802.11b/g MIMO technology. It adopts Qualcomm QCA9531 solution, 16M flash memory/128M memory, 100M network interface, 2.4G 802.11n MIMO technology wireless processing speed up to 300Mbps, which can meet the needs of 64 people for wireless high-speed Internet access at the same time. The hardware design meets intrinsic safety requirements, and the highly reliable multi-level power supply protection and port protection design ensure that the BL70 wireless product can work in harsh industrial control environments for a long time.

Ultra-miniature design concept, terminal interface, stable and shock-resistant, can be built into robots, cameras, handheld remote controls, explosion-proof boxes, AGV and other equipment.

It can be widely used in industrial applications, mining intrinsic safety, mobile robot inspection, high-bandwidth communications and other industry applications.

Easily adapt to extreme outdoor environments of high temperature and cold. It can be equipped with an external directional antenna, supports pole/wall-mounted installation, and supports terminal power supply. It is flexible and plug-and-play. It has the characteristics of high gain, high receiving sensitivity, high bandwidth, high number of accesses, etc., and has a wide range of wireless coverage. , stable performance, suitable for wireless transmission scenarios such as mines, pipe corridors, etc.

## Hardware

Model	BL70DG-AP
Chipset	Qualcomm QCA9531 300Mbps
CPU Clock Speed	550MHz
Standards	2.4G:300M 802.11b/g/n MIMO Technology
Memory	128MB DDR2 RAM
Flash	16MB
Interface	LAN1/PoE+WAN1 10/100Mbps RJ45
Button	1*Reset Button, Long press to reset, short press to adjust digital display number
Power Consumption	<9W
Power Supply	Phoenix terminal 9v-24V
Weight	0.7KG
Toggle switch	Define product AP Mode and Repeater Mode
Antenna	2*SMA antenna interfaces

## Environment Temperature

Operating temperature	Temperature: -40°C~+55°C (working), -40°C~+70°C (storage) Humidity (non-condensing): 5% ~ 90% (working), 5% ~ 95% (storage)
-----------------------	---

## Radio frequency Feature

Frequency Range	ISM band: 2.400 ~ 2.4835 GHz
Channel	2G:1、2、3、4、5、6、7、8、9、10、11、12、13
Modulation method	OFDM = BPSK, QPSK, 16-QAM, 64-QAM; DSSS = DBPSK, DQPSK, CCK
Output power	2.4G: 11n @MCS0~2/MCS8~10: $27 \pm 1$ dBm @MCS7/MCS15: $23 \pm 1$ dBm    11g @6~24M: $27 \pm 1$ dBm @54M: $23 \pm 1$ dBm    11b @1~11M: $27 \pm 1$ dBm
Receiving sensitivity	2.4G: 11n: -86dbm@MCS0 -68dbm@MCS7 - 86dbm@MCS8 -64dbm@MCS15    11g: - 90dbm@6Mbps -68dbm@54Mbps    11b: - 90dbm@1Mbps -85dBm@11Mbps
EVM	802.11n: $\leq -29$ dB    802.11g: $\leq -26$ dB802.11b:
Frequency offset	$\pm 20$ ppm

## Software Feature

Working Mode	Router, AP and Repeater
Seamless roaming	Support KVR fast switching without perception
VLAN	Support VLAN classification based on access SSID
AC Management	Support AC cross-layer three switch management
Users	64
System	Restore factory/system restart



Welcome to visit us for more info or quotation:

SHENZHEN SHUOTIAN INFORMATION TECHNOLOGY CO.,LTD

5/F,Shenzhou Building,Bantian Street, Longgang District,

Shenzhen,Guangdong Province,

ChinaWeb: [www.sailskywifi.com](http://www.sailskywifi.com)

E-mail: [natalie@sskycn.com](mailto:natalie@sskycn.com)

Tel/WhatsApp/Wechat: +86-13760857118